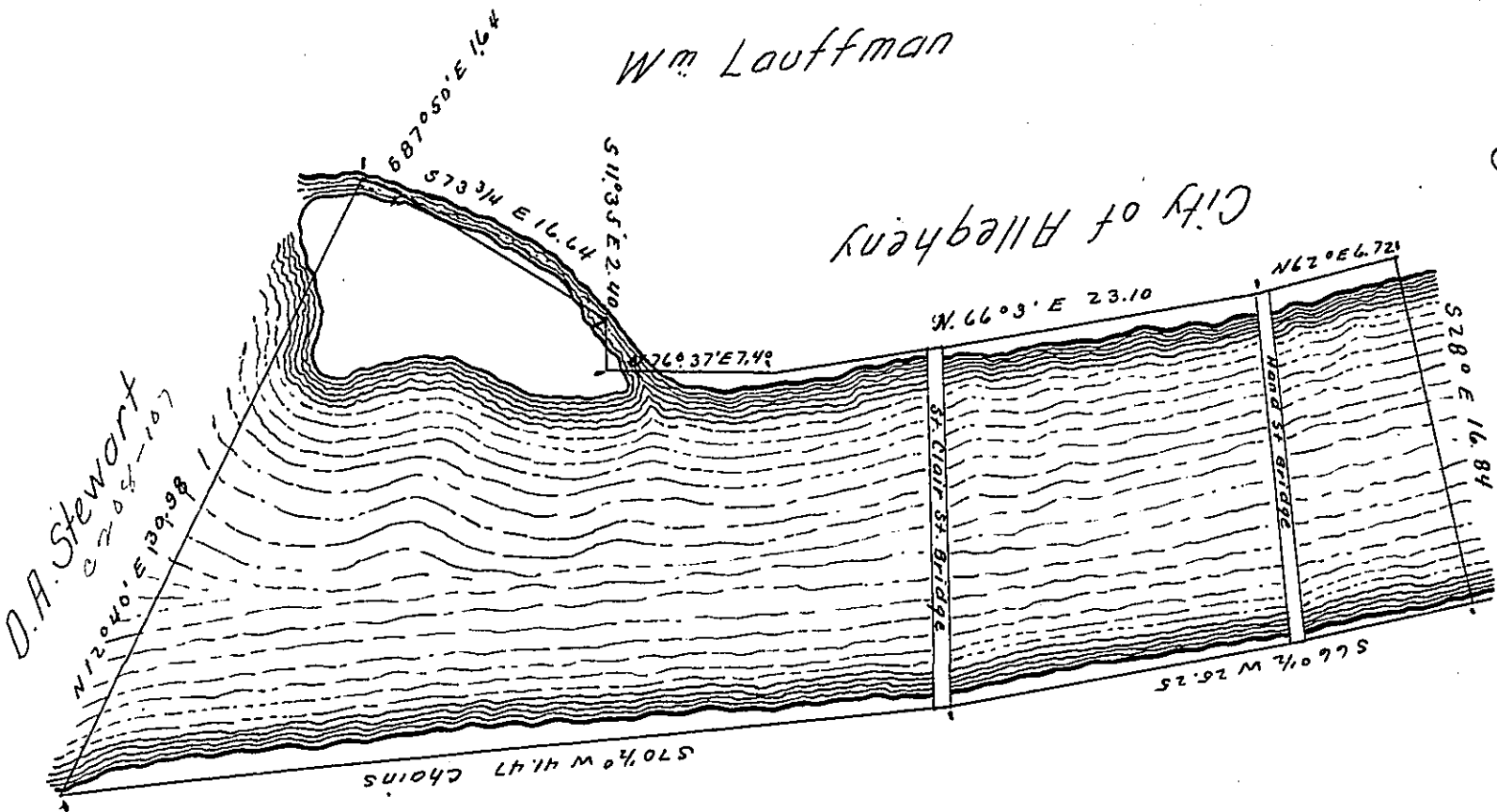


Wm Lauffman

City of Allegheny

Geo. F. Rohausser  
661-2612



City of Pittsburgh

Brought of a survey of One hundred acres of the bed of the Allegheny River surveyed upon a Warrant granted to Wm Lauffman dated the 20<sup>th</sup> day of September A. D. 1858. situate between the Cities of Pittsburgh & Allegheny in Allegheny County, Pennsylvania.

Executed as of the 23<sup>d</sup> day of September, 1858.

Area --- A. R. P. 107. 3. 29

E. H. Heastings

Offsets --- 7. 3. 29

100 acres

For Isaac Morley C.S.

I approve of the above.

Isaac Morley

IN TESTIMONY that the above is a copy of the original remaining on file in the Department of Internal Affairs of Pennsylvania, made conformably to an Act of Assembly approved the 16th day of February, 1833, I have hereunto set my Hand and caused the Seal of said Department to be affixed at Harrisburg, this seventh day of September 1905.

Isaac R. Johnson  
Secretary of Internal Affairs.